



MANN-FILTER cabin filters

For maximum filtration efficiency – providing optimum ventilation and a most comfortable environment

**MANN
FILTER**

MANN-FILTER – Perfect parts. Perfect service.



The benefits of MANN-FILTER cabin filters:

- optimum ventilation inside the vehicle through low flow resistance
- even the smallest particles (0.1 µm) are reliably filtered out
- consistent filtration performance throughout the entire service interval
- greatest filtration efficiency through a combination of mechanical and electrostatic attraction
- exact fit and seal
- detailed instructions for quick and simple fitting (passenger cars)

MANN-FILTER cabin filters: Clean air inside the vehicle

The air in urban areas contains large quantities of dust, pollen, soot and other particles, as well as gases which are harmful to health. More and more people are suffering from allergies and are increasingly aware of the subject of air conditioning and cabin filters. As a result, more vehicles leave the factory already fitted with cabin filters.

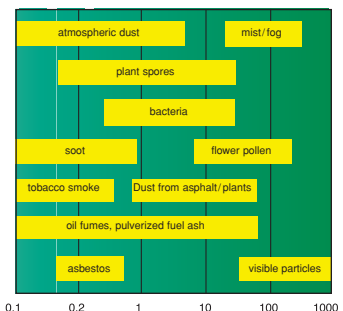
Growth market: Cabin filters

In Germany, 10.000 vehicles per day are fitted with cabin filters as standard, and this trend is increasing. Original MANN-FILTER cabin filters are very highly regarded by the vehicle manufacturers.

MANN-FILTER cabin filters remove virtually all pollen and other unwanted particles, as well as harmful gases (adsotop® combi-filters) from the air, thus ensuring a better atmosphere inside the vehicle. This is particularly important for people suffering from allergies, asthma, and for children.

Continuous research for new filter media

We are constantly optimising the filter media for MANN-FILTER cabin filters, and adapting them to meet increasing requirements. Choice of filter media is always linked to the vehicle manufacturer's specification and the space available in the vehicle. As a result, the optimum filter media is used by MANN-FILTER for every application.



Pollutants in road traffic (Aerodynamic diameter in µm)

Non-woven: a safe medium

MANN-FILTER non-woven materials are made up of many small fibres. Their structure provides reliable and almost complete separation of dust and soot particles. MANN-FILTER non-woven naturally does not have any chemical impregnation, and is odour-free.

MANN-FILTER cabin filter shapes

MANN-FILTER cabin filters provide effective protection for the air conditioning system. They increase comfort in the passenger compartment and optimise driving safety. Two types of cabin filter from MANN-FILTER are available:

- particle filters
- adsotop® combi-filters (with activated charcoal)

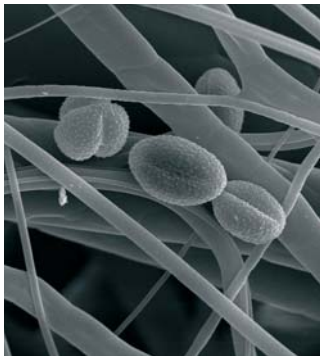
Particle filters: maximum possible filtration performance in the smallest space

The particle filter keeps dust and particles such as pollen, diesel soot or tyre dust away from the interior of the vehicle.

It is important to obtain the maximum possible filtration performance in the space available.

With MANN-FILTER, that goes without saying. Through the special pleating technique, the actual filtration area is

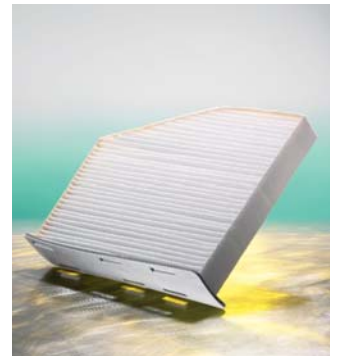
increased without having to change the size of the filter. Laboratory tests confirm that up to 99 % of dust particles and pollen are almost completely retained.



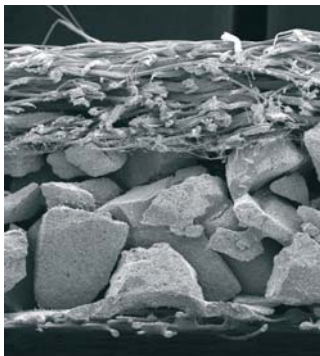
Microscopic view:
Pollen deposited on the fibres



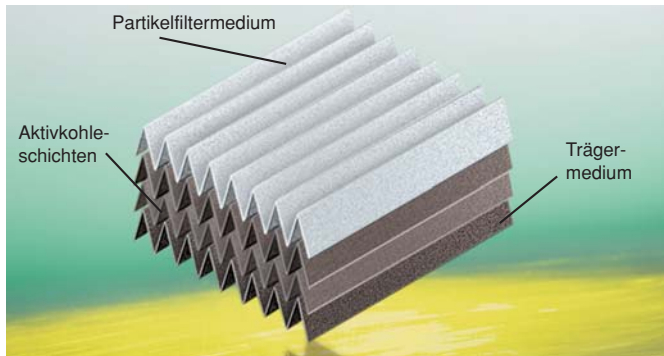
Cross-section of a particle filter: Through the special pleating technique, the largest possible filtration performance is achieved in the smallest space



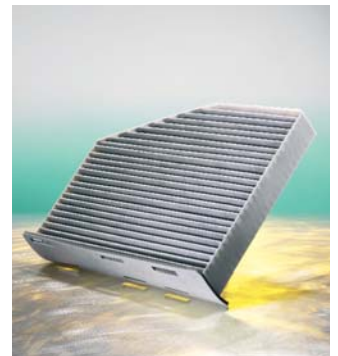
Cabin filter CU 2939



Microscopic view: Activated charcoal embedded in non-woven



Cross-section of a combi-filter: The non-woven holds back the particles, whilst the activated charcoal adsorbs gases and odours



Cabin filter CUK 2939

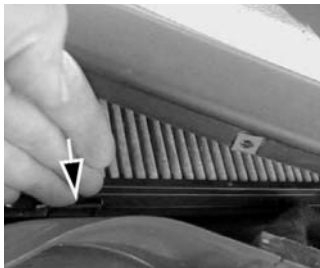
MANN-FILTER adsotop® combi-filter: The activated charcoal specialist

The MANN-FILTER adsotop® combi-filter has an additional function, compared with the particle filter. The activated charcoal layer embedded in

the non-woven adsorbs, like a sponge, harmful gases such as nitrogen dioxide, fuels and ozone into pores which are 10.000 times finer than a human hair. That is how the combi-filter ensures a healthy cabin environment.

This modern filter can contain fleece-based particle filter media, one or more activated carbon layers and a carrier medium to improve stability. Even the finest harmful dust particles are efficiently retained.

MANN-FILTER cabin filters: Easy handling



Now you can breathe deeply with MANN-FILTER cabin filters. Simply order the MANN-FILTER cabin filter animated sequence.

Saving time and costs: The installation instructions for MANN-FILTER cabin filters

The cabin filter is fitted in different places, depending on the type of vehicle. In some cases it is even hard to find. MANN-FILTER provides practical support when servicing through detailed installation instructions.

For you, this means:

- easy handling
- quicker work
- satisfied customers

The practical MANN-FILTER installation instructions supplied with cabin filters for every type of passenger car make your job easier.

Advantages to you:

- immediate location of the fitting position
- fast and easy assembly thanks to step-by-step explanations

With these instructions, you save time and cost. Replacing the filter is therefore worthwhile for both customer and garage. The instructions are also available on CD-ROM.

You can order more product brochures, catalogues (also on CD-ROM), a cross-reference list and a dimension table under www.mann-filter.com or by telephone. Or you can use our internet catalogue.



MANN+HUMMEL GMBH

Automotive Aftermarket · 71631 Ludwigsburg · Germany
Customer Service Center

Germany: Tel. +49 (71 41) 98-25 50 · Fax +49 (71 41) 98-25 58
Other countries: Tel. +49 (71 41) 98-28 80 · Fax +49 (71 41) 98-25 58
E-mail: customer-service@mann-hummel.com · www.mann-filter.com